

Argonaut Bogie MK2 Installation & Maintenance

For Your Trailer Axle Suspension Needs Call York :

Head Office

Singapore

York Transport Equipment (Asia) Pte. Ltd.
No. 5 Tuas Avenue 6, Singapore 639295
Email : enquiry@yorktpt.com.sg
Tel : (65) 6861 0577 Fax : (65) 6861 4045

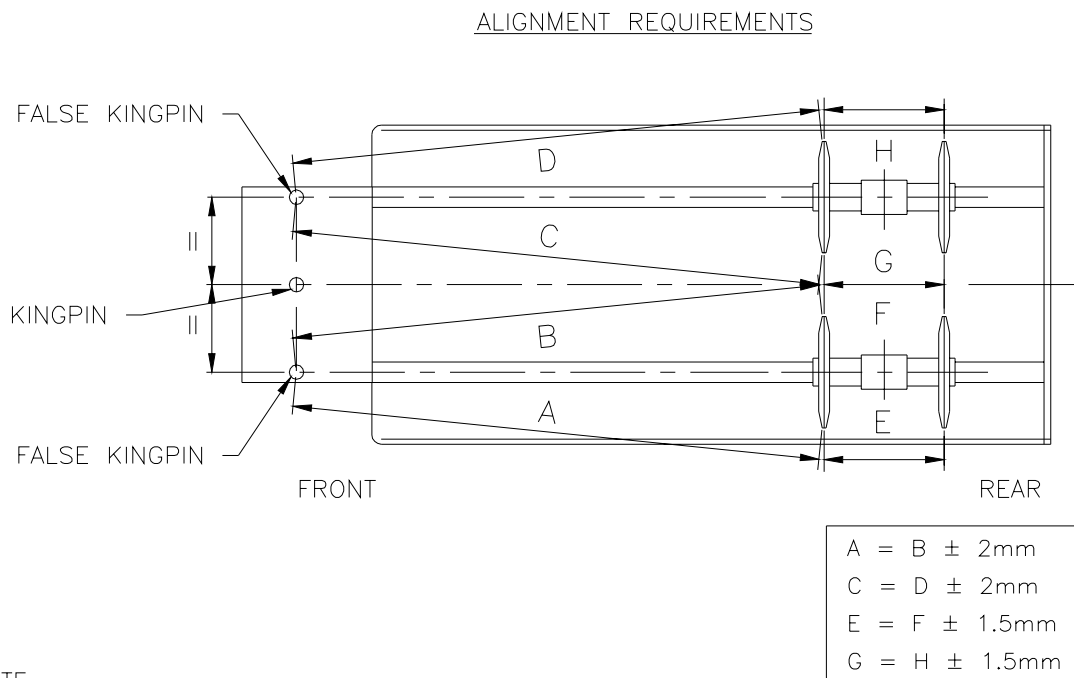
Installation Instructions:

For trailers under construction, the supervision installation is ideally carried out with the trailer body firmly supported at bottom :

- 1) Position AGB Bogie onto the chassis mounting bracket, with long bolt (M30 x 3.5 x 100) x 16, and tighten nut to 150 - 200Nm, so that 4 of the central pedestal are firmly attached to chassis mounting bracket. (Bolts and nuts are not supplied)
- 2) Adjust AGB axle alignment according to alignment drawing below. The alignment can be adjusted by loosening M30 nuts slightly and move the Bogie until the correct alignment is achieved.
- 3) Tack weld central pedestal to the chassis mounting bracket.
- 4) Confirm the alignment again; tighten all nuts to 1000Nm.
- 5) Weld square bars (size 15 x 15 x 50mm long) along the central pedestal onto mounting bracket by 12 - 15 fillet weld. This will secure the alignment.

Note:

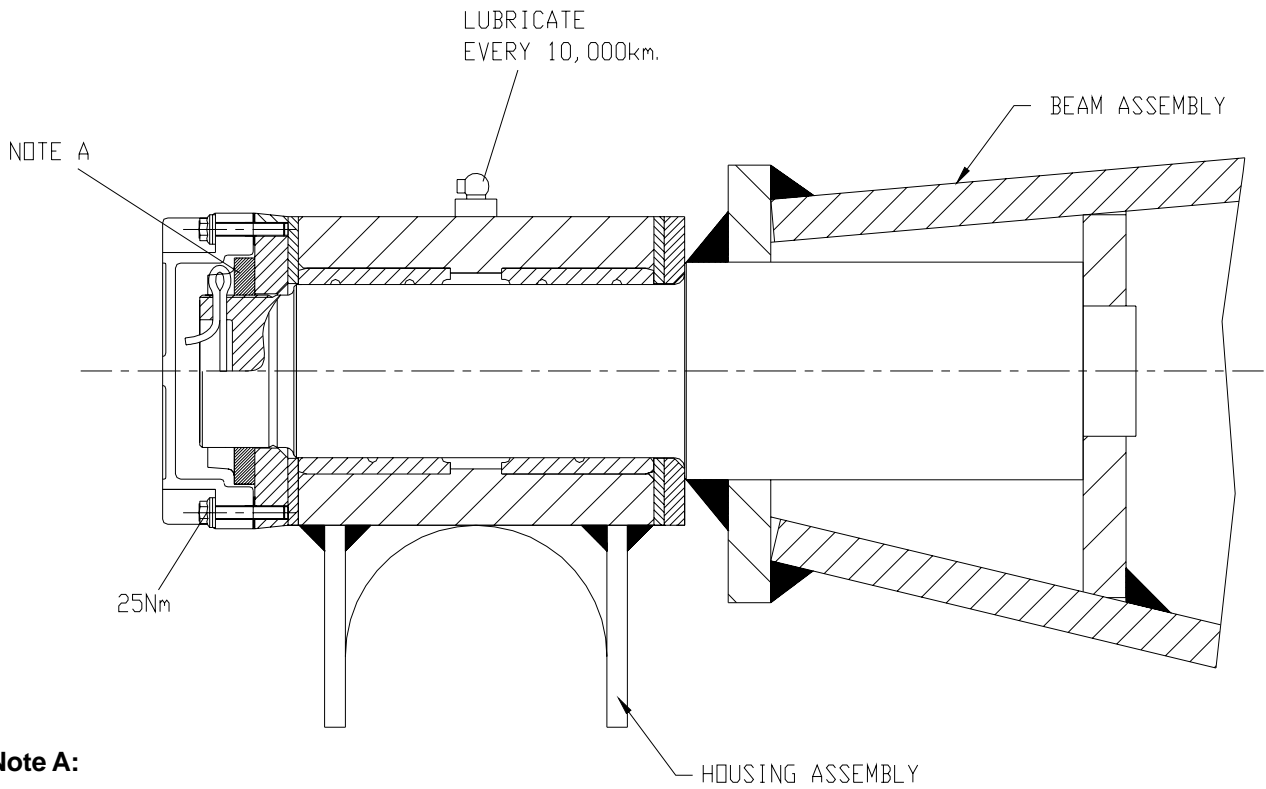
All torque settings are subject to a tolerance of +/- 3%.



NOTE

- 1) BEFORE THE DELIVERY OF ARGONAUT SUSPENSION, DIMENSION E, F,G AND H HAVE BEEN CHECKED AND ARE WITHIN SPECIFICATION.
- 2) THE PEDESTALS OF THE ARGONAUT SUSPENSION SHOULD BE WELDED TO THE CENTRE OF THE CHASIS MAIN FRAME AFTER CHECKING 3) AND 4) BELOW.
- 3) TWO FRONT AXLES MUST BE IN ONE LINE AND SYMMETRICAL TO KINGPIN. TO DO SO, TWO FALSE KINGPINS CAN BE INSTALLED FOR MAKING SURE $A = B \pm 2\text{mm}$, $C = D \pm 2\text{mm}$ ARE ACHIEVED BEFORE THE FULL WELD OF PEDESTAL.
- 4) DURING THE CHECKING, AXLE BEAMS SHOULD BE PARALLEL TO THE TOP OF THE TRAILER.

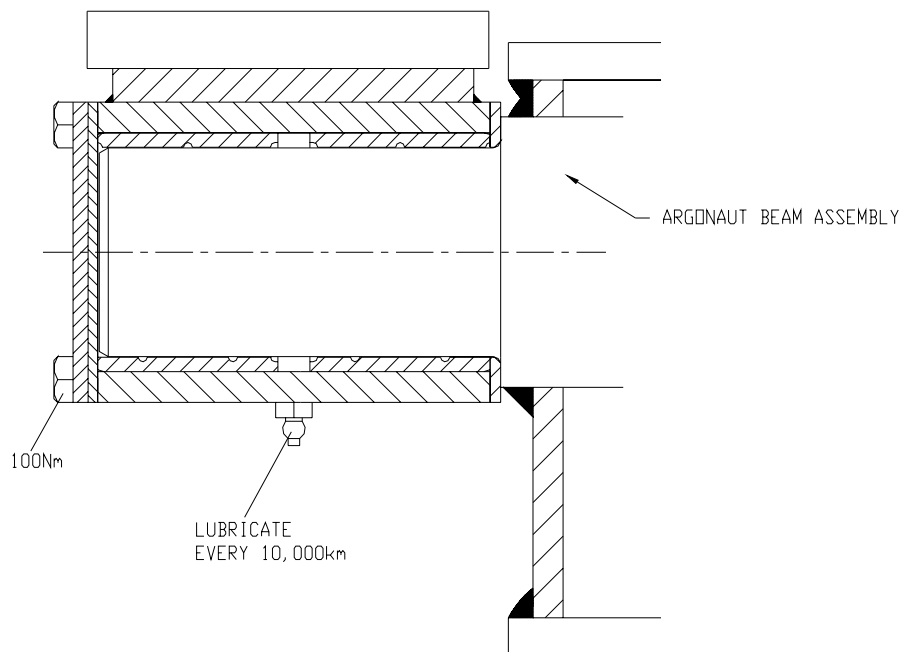
Axle Pivot Installation



Note A:

Tighten the Castellated Nut,
within torque 140Nm - 200Nm.
Set slot line up with pin hole.
Insert Split Pin, through the hole and bend the pin.

Main Pivot Installation



Servicing Intervals:

After first 500km

Use torque wrench to re-tighten all nuts at the correct torque.

Every 6 months or every 10,000km

Use torque wrench to re-tighten all nuts at the correct torque for the first 500km.

Grease all the bushes as per drawings (page 3).

Re-tighten the pivot nut. Check bush and components as per drawing (page 3).

Check and adjust brakes, check brake lining for wear.

Lubricate camshaft and slack adjuster.

Rotate axle wheels and check wheel bearings to ascertain if there is excessive bearing movement. Re-adjust wheel bearing if necessary, as per York Axle Service Manual.

Every 2 years or every 40,000km

Open and check all bushes and components as per drawings (page 3).

Repair or replace if necessary.

Remove axle wheel hub caps and inspect bearing and lubrication. Inspect and service wheel bearing, hub, hub seal, drum and brake lining as per York Service Manual and replace if necessary.